



**SEZ**  
DOLNÝ KUBÍN



# K4

## INSTALLATION BOX IP 44, IP 55, IP 66

### SERIES S-BOX

S-Box enclosures are in compliance with standard EN 60670-1. On their bottom they are equipped with protrusions for attachment of electrical appliances, for example by using of a DIN rail or through a direct bottom-fixing.

S-Boxes offer as much as 3 sets of mounting holes located either outside of the protected area or inside of the box, thus enabling to be fixed in three ways to the wall or the surface. The box lid is fastened with zinc-plated metal screws for the secure and thorough manipulation

after years. For the user's convenience the open lid can be left hanging on the box with 1 screw making the installation and maintenance significantly faster, easier and more comfortable.

#### Main characteristics:

- Resistance to glow wire test: 650 °C
- Nominal working voltage: 400 V
- Compliant with IEC 60670-1
- Protection class II

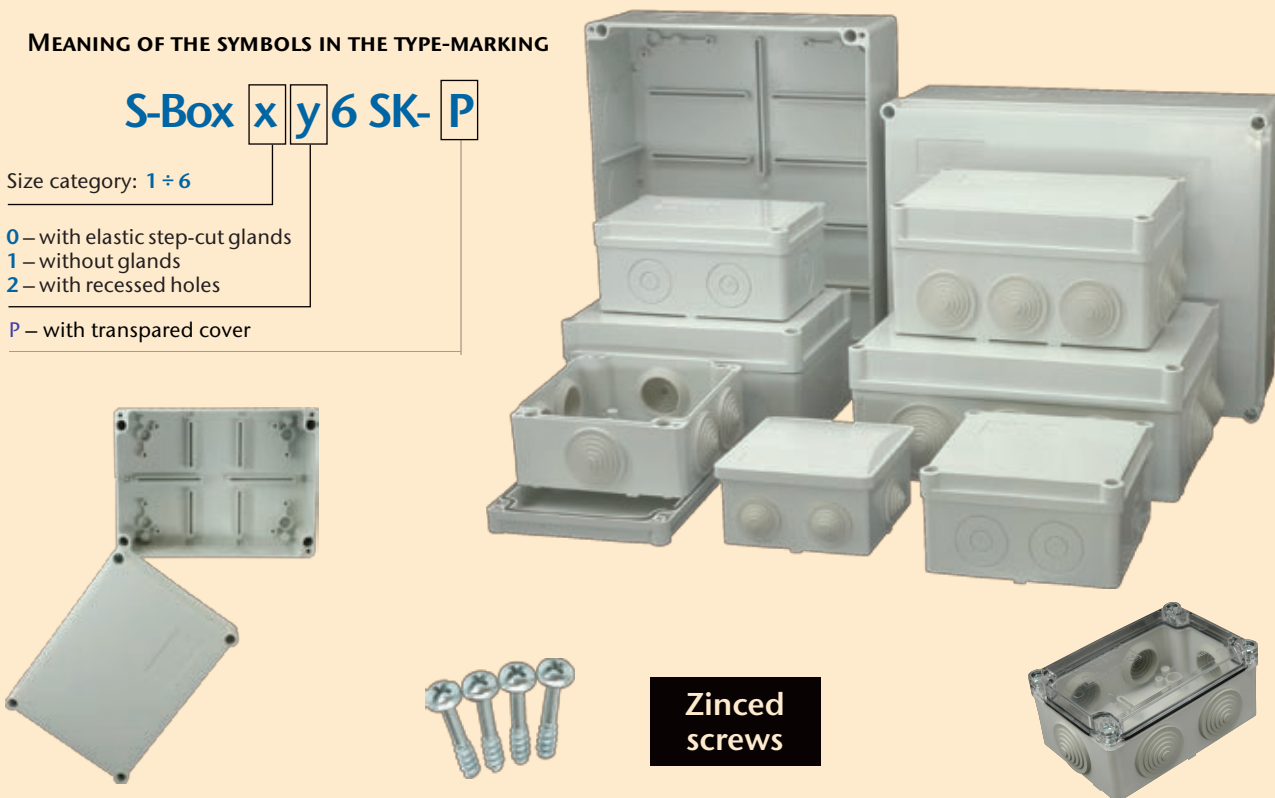
#### MEANING OF THE SYMBOLS IN THE TYPE-MARKING

S-Box **x** **y** 6 SK- **P**

Size category: 1 ÷ 6

- 0 – with elastic step-cut glands
- 1 – without glands
- 2 – with recessed holes

P – with transpored cover



**Zinc-plated screws**

## UNIVERSAL COMPACT S-Box 036 SK

S-Box 036 SK



**IP 44**

Interior dimensions:	80x40x80 mm
Elastic step-cut glands:	6x Pg13,5 (ø20,5 mm)
Resistance to glow wire test:	650 °C
Compliant with:	STN EN 60670-1
Packing:	140 pcs
Color:	grey
Non screw lid attachment - just push	

# INSTALLATION BOXES S-BOX X06 WITH GLANDS

S-Box 106 SK



IP 55

Interior dimensions: 100 x 50 x 100 mm  
 Elastic step-cut glands: 6x Pg21 (ø 29 mm)  
 Resistance to glow wire test: 650 °C  
 Compliant with: STN EN 60670-1  
 Packing: 90 ks  
 Color: grey

S-Box 206 SK



IP 55

Interior dimensions: 120 x 50 x 80 mm  
 Elastic step-cut glands: 6x Pg21 (ø 29 mm)  
 Resistance to glow wire test: 650 °C  
 Compliant with: STN EN 60670-1  
 Packing: 108 pcs  
 Color: grey

S-Box 306 SK



IP 55

Interior dimensions: 150 x 70 x 110 mm  
 Elastic step-cut glands: 10x Pg21 (ø 29 mm)  
 Resistance to glow wire test: 650 °C  
 Compliant with: STN EN 60670-1  
 Packing: 50 pcs  
 Color: grey

S-Box 406 SK



IP 55

Interior dimensions: 190 x 70 x 140 mm  
 Elastic step-cut glands: 10x Pg29 (ø 37,5 mm)  
 Resistance to glow wire test: 650 °C  
 Compliant with: STN EN 60670-1  
 Packing: 28 pcs  
 Color: grey

S-Box 506 SK



IP 55

Interior dimensions: 240 x 90 x 190 mm  
 Elastic step-cut glands: 12x Pg29 (ø 37,5 mm)  
 Resistance to glow wire test: 650 °C  
 Compliant with: STN EN 60670-1  
 Packing: 14 pcs  
 Color: grey

S-Box 606 SK

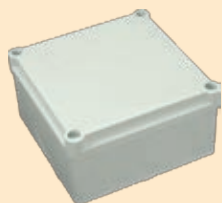


IP 55

Interior dimensions: 300 x 120 x 220 mm  
 Elastic step-cut glands: 12x Pg29 (ø 37,5 mm)  
 Resistance to glow wire test: 650 °C  
 Compliant with: STN EN 60670-1  
 Packing: 6 pcs  
 Color: grey

# INSTALLATION BOXES S-BOX X16 WITHOUT GLANDS

S-Box 116 SK



IP 66

Interior dimensions: 100x50x100 mm  
Resistance to glow wire test: 650 °C  
Compliant with: STN EN 60670-1  
Packing: 90 pcs  
Color: grey

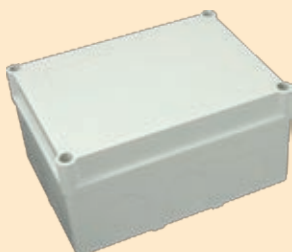
S-Box 216 SK



IP 66

Interior dimensions: 120x50x80 mm  
Resistance to glow wire test: 650 °C  
Compliant with: STN EN 60670-1  
Packing: 108 pcs  
Color: grey

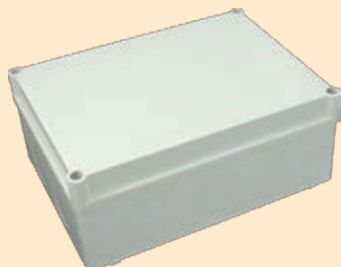
S-Box 316 SK



IP 66

Interior dimensions: 150x70x110 mm  
Resistance to glow wire test: 650 °C  
Compliant with: STN EN 60670-1  
Packing: 50 pcs  
Color: grey

S-Box 416 SK



IP 66

Interior dimensions: 190x70x140 mm  
Resistance to glow wire test: 650 °C  
Compliant with: STN EN 60670-1  
Packing: 28 pcs  
Color: grey

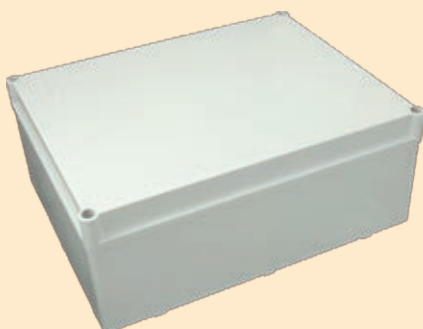
S-Box 516 SK



IP 66

Interior dimensions: 240x90x190 mm  
Resistance to glow wire test: 650 °C  
Compliant with: STN EN 60670-1  
Packing: 14 pcs  
Color: grey

S-Box 616 SK



IP 66

Interior dimensions: 300x120x220 mm  
Resistance to glow wire test: 650 °C  
Compliant with: STN EN 60670-1  
Packing: 6 pcs  
Color: grey

# INSTALLATION BOXES S-Box x26 WITH RECESSED HOLES FOR CABLE GLANDS

## S-Box 126 SK



IP 66

Interior dimensions: 100 x 50 x 100 mm  
 Diameter of holes for cable glands: 6x  $\varnothing$  29 or 6x  $\varnothing$  12,5 mm  
 Resistance to glow wire test: 650 °C  
 Compliant with: STN EN 60670-1  
 Packing: 90 pcs  
 Color: grey

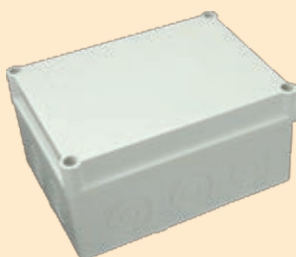
## S-Box 226 SK



IP 66

Interior dimensions: 120 x 50 x 80 mm  
 Diameter of holes for cable glands: 6x  $\varnothing$  29 or 6x  $\varnothing$  12,5 mm  
 Resistance to glow wire test: 650 °C  
 Compliant with: STN EN 60670-1  
 Packing: 108 pcs  
 Color: grey

## S-Box 326 SK



IP 66

Interior dimensions: 150 x 70 x 110 mm  
 Diameter of holes for cable glands: 10x  $\varnothing$  29 or 10x  $\varnothing$  12,5 mm  
 Resistance to glow wire test: 650 °C  
 Compliant with: STN EN 60670-1  
 Packing: 50 pcs  
 Color: grey

## S-Box 426 SK



IP 66

Interior dimensions: 190 x 70 x 140 mm  
 Diameter of holes for cable glands: 10x  $\varnothing$  37,5 or 10x  $\varnothing$  12,5 mm  
 Resistance to glow wire test: 650 °C  
 Compliant with: STN EN 60670-1  
 Packing: 28 pcs  
 Color: grey

## S-Box 526 SK



IP 66

Interior dimensions: 240 x 90 x 190 mm  
 Diameter of holes for cable glands: 12x  $\varnothing$  37,5 or 12x  $\varnothing$  12,5 mm  
 Resistance to glow wire test: 650 °C  
 Compliant with: STN EN 60670-1  
 Packing: 14 pcs  
 Color: grey

## S-Box 626 SK



IP 66

Interior dimensions: 300 x 120 x 220 mm  
 Diameter of holes for cable glands: 12x  $\varnothing$  37,5 or 12x  $\varnothing$  12,5 mm  
 Resistance to glow wire test: 650 °C  
 Compliant with: STN EN 60670-1  
 Packing: 6 pcs  
 Color: grey

### Manufacturer:

SEZ DK a. s., M. R. Štefánika 1831/46, 026 19 Dolný Kubín, Slovakia  
 Tel.: +421 43 5809 226; +421 43 5809 404; Fax: +421 43 5809 503  
 e-mail: sales@sez.biz, www.sez.sk

